

PRACTICAL HIGH-LEVEL DAIRY MANAGEMENT

A Case Study from a Wisconsin Modern Commercial Dairy Farm

Partnership: Blanca
IRTA-Department of Ruminant Production
University of Wisconsin-Dairy Science Department



Blanca
From the Pyrenees



THE UNIVERSITY
of WISCONSIN
MADISON

IRTA
RESEARCH IN TECHNOLOGIA
AGROALIMENTARIES

WISCONSIN UNIVERSITY WORKSHOP

PRACTICAL HIGH-LEVEL DAIRY MANAGEMENT **A Case Study from a Wisconsin Modern Commercial Dairy Farm**

A Wisconsin commercial dairy farm: Rosy Lane Holsteins LLC will be analyzed from all productive management aspects using actual data collected from the farm. The owner and dairy farm manager, Lloyd Holterman, will also attend the workshop and provide his insights of analyses and results, as well as attending any questions about the data. All attendees will participate in all four breakout sessions which will be repeated twice.

Reproduction management and its economic value

V. E. Cabrera, and M. Wiltbank

Nutrition and feed efficiency

L. Armentano, D. Combs, and R. Shaver

Genetics, genomics, and genetic linear evaluation

T. Halbach, and K. Weigel

Calf and heifer rearing, welfare, and health (both heifers and cows)

A. Bach, L. Hernandez, and A. Stanton

Each breakout session will begin with a central question, such as “Is there a problem with reproduction?” or “Can we improve profit by modifying the ration” The Workshop will finish with a Plenary discussion where reports from all breakout sessions will be provided and discussed. All participants will be in the same room including instructors and the Wisconsin dairy producer. Each breakup group will present and rationalize conclusions. A plan of action with priorities to improve profitability of the farm will be proposed among all participants.

More information about Rosy Lane Holsteins LLC can be found at the following links [Facebook](#), [video](#), [article](#)



Monday 12 January, 2015

Arrival to Barcelona.- Hotel Barcelona NH

Tuesday 13 January 2015

08:30 Bus departure to Blanca from Barcelona
11:00-11:30 Welcome and coffee
11:30-12:30 Introduction and description of activities
12:30-13:30 Description of the case study
13:30-15:00 Lunch
15:00-17:00 Breakout session I
17:00-17:30 Coffee break
17:30-19:30 Breakout session II
19:30 Depart to Hotel

Wednesday 14 January 2015

08:30-10:30 Breakout session III
10:30-11:00 Coffee break
11:00-13:00 Breakout session IV
13:00-15:00 Lunch
15:00-16:30 Plenary session: General discussion and resolution of the case
17:00 Bus departs to Barcelona

Language

The workshop will be in English. Simultaneous translation might be possible, but should be arranged with Blanca in advanced (please note the cost of translation is not included).

Maximum number of attendees: 48

Enrollment will be on a first-come first-serve basis.

To register, please fill in the registration form at the bottom of the brochure.

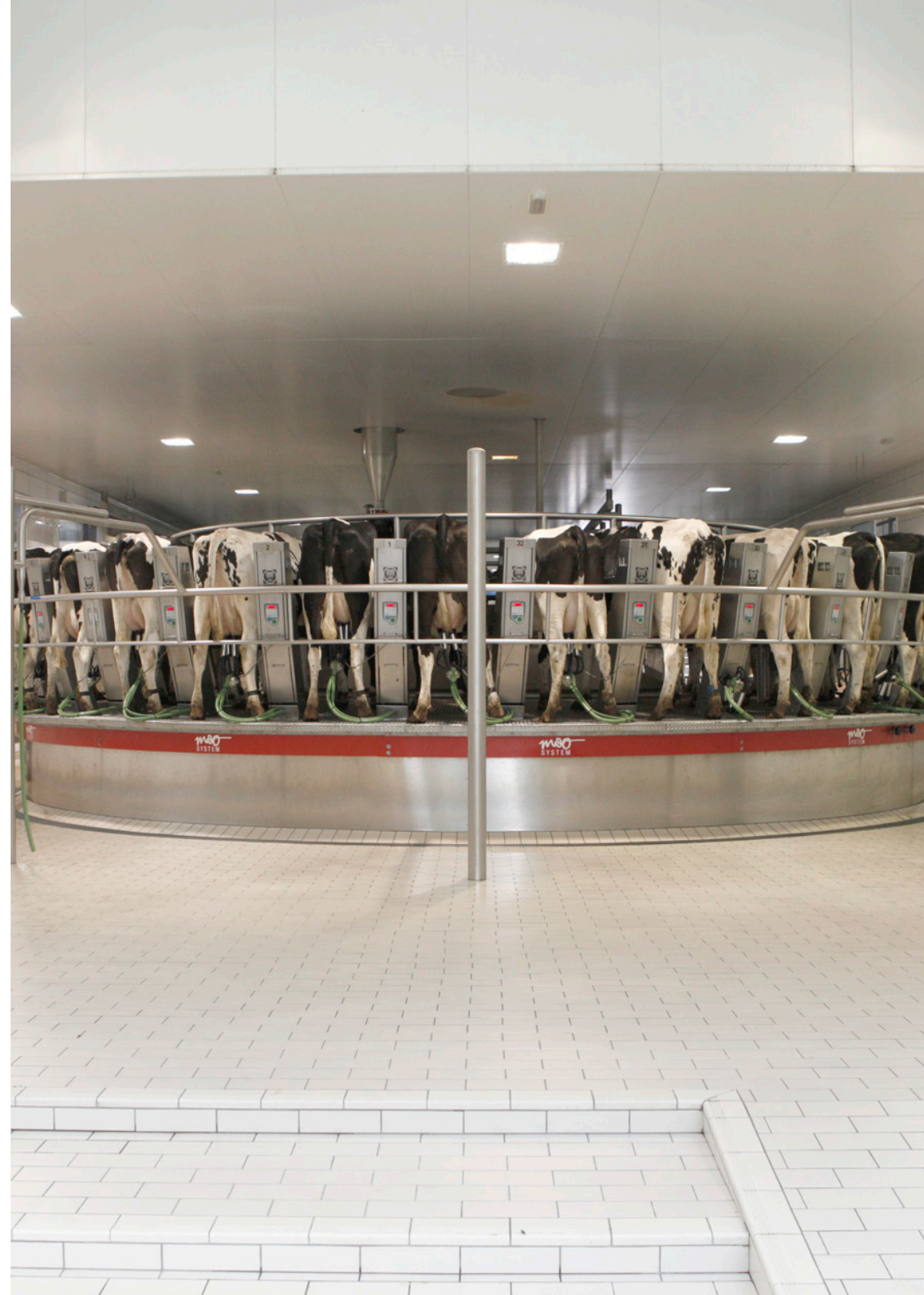
Transportation

A bus will depart from Barcelona Hotel on Tuesday 12th at 08:30, and will leave Blanca on Wednesday 13th at 17:00, arriving at Barcelona airport around 19:30 and Barcelona centre at 20:00.

Cost

1,650 €/delegate + VAT

Includes tuition fees and materials, coffee breaks, one dinner, two lunches, and three nights of hotel (two nights in Barcelona/one night near Blanca from The Pyrenees).





INSTRUCTORS

Instructors from University of Wisconsin Dairy Science Department

KENT WEIGEL

kweigel@wisc.edu

Dept. Chair- Professor
Breeding and Genetics

Dr. Weigel's research focuses on international genetic comparisons, genotype by environment interactions, genetic evaluation of health and management traits, and strategies to control inbreeding.

LOU ARMENTANO

learment@wisc.edu

Professor
Nutrition

Dr. Armentano specializes in ruminant nutrition physiology, especially the role of liver metabolism and its relation to protein nutrition. He also researches whole animal energy metabolism and the utilization of high fiber by-products for nutrition of the dairy herd.

VICTOR CABRERA

vcabrera@wisc.edu

Management
Associate Professor

Dr. Cabrera focuses on model-based decision support in dairy cattle and in dairy farm production systems. Dr. Cabrera primary interest is to improve cost-efficiency and profitability along with environmental stewardship in dairy farms by using simulation techniques, artificial intelligence and expert systems. Dr. Cabrera research and Extension programs involve interdisciplinary and participatory approaches towards the creation of user-friendly decision support systems.
More information at DairyMGT.info

DAVE COMBS

dkcombs@facstaff.wisc.edu

Professor
Nutrition

Professor Combs conducts research in forage utilization and ruminal digestion of fiber by dairy cows. Currently his research is focused on forage fiber utilization by high producing dairy cows, and development of laboratory methods to predict forage quality. He has also over 20 years experience in dairy grazing research. Dr. Combs also teaches several undergraduate and graduate level courses in dairy cattle nutrition and management and coaches the UW-Madison intercollegiate dairy challenge team.

INSTRUCTORS

Instructors from University of Wisconsin Dairy Science Department

LAURA HERNANDEZ Assistant Professor
Lactation Biology

llhernandez@wisc.edu

Dr. Hernandez's research focuses on autocrine/paracrine factors that regulate milk synthesis and secretion, particularly during the transition periods of pregnancy to lactation and lactation to the dry period. The goal of Dr. Hernandez's research is to elucidate novel methods for improving the ability of dairy cattle to maximize their lactation potential, either by improving the transition to lactation and/or alleviating dry period issues.

AMY L. STANTON Assistant Professor
Animal Well-Being Specialist

alstanton@wisc.edu

Dr. Stanton focuses her research on sickness behavior and cow and calf comfort. One aspect of sickness behavior is to try to identify when is the optimal time to look for sick animals, and then what are their behaviors and how can we train people to identify sick calves. Her goal is to improve disease detection and prevent disease outbreaks by identifying the sick animal early.

Regarding cow comfort, Dr. Stanton is interested on facilities design.

MILO WILTBANK Professor
Reproductive Physiology

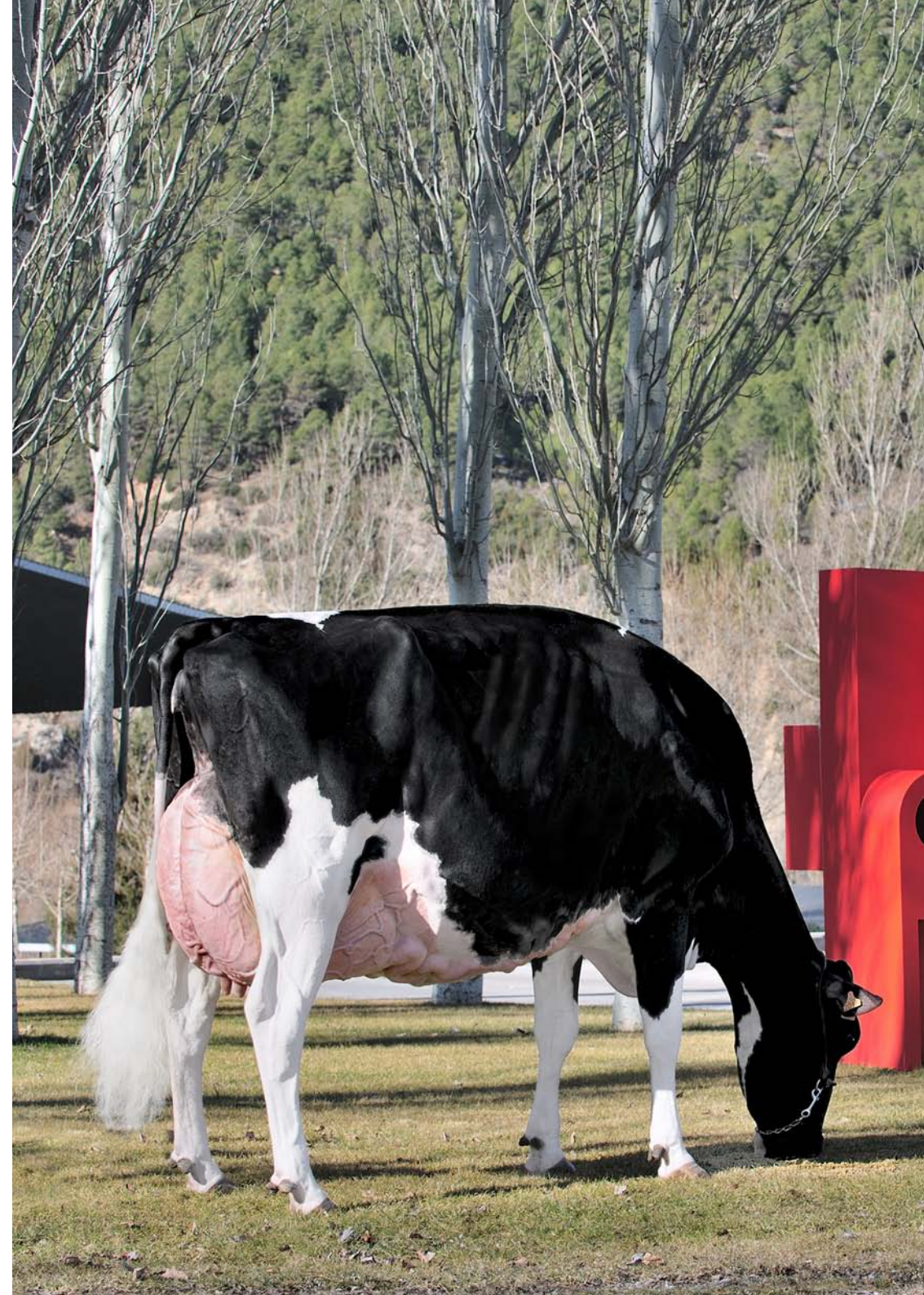
wiltbank@wisc.edu

Dr. Wiltbank studies the regulation of ovarian function. Basic studies focus on the regulation of hormonal receptors in the corpus luteum and developing ovarian follicle. Applied studies focus on development of methods that allow timed artificial insemination and improve pregnancy rates in dairy cattle.

RANDY SHAVER Professor
Nutrition

rdshaver@wisc.edu

Dr. Shaver's extension and research programs focus on applied nutrition of lactating dairy cattle. His research focuses on improving nutrient utilization of corn silage and corn grain and B-vitamin supplementation of dairy diets.



INSTRUCTORS

Instructors from University of Wisconsin Dairy Science Department

TED HALBACH

Dairy Cattle Evaluation Instructor

tjhalbach@wisc.edu

Ted Halbach is a dairy management instructor in UW-Madison's Department of Dairy Science. Since joining the dairy science staff in 1998, he has coordinated and supported dairy youth programs throughout Wisconsin, taught dairy cattle evaluation classes for both the four-year college program and the short course, and coached the UW-Madison's highly successful dairy judging team. Ted now coordinates Dairy Science 233 and 234, that are both dairy management courses covering industry benchmarks and applied practices. He is also charged with developing an in-house Dairy Challenge competition.

Speaker from Rosy Lane Holsteins LLC

LLOYD HOLTERMAN

Dairy farmer focused on high production.

He graduated from the University of Wisconsin – Madison in 1980 in Dairy Science. He was a member of the Dairy Cattle Judging Team. Currently manages with his wife Daphne 920 total cows and 870 youngstock. They also grow 1,600 acres of forage and do some custom harvesting. Genetic sales account for 1-5% of gross revenue, depending on the year.” The Holterman’s are dedicated dairy Agvocates as well as very successful dairy farmers. All tasks at Rosy- Lane are thoughtfully considered and thoroughly implemented.

Instructor from IRTA Department of Ruminant Production

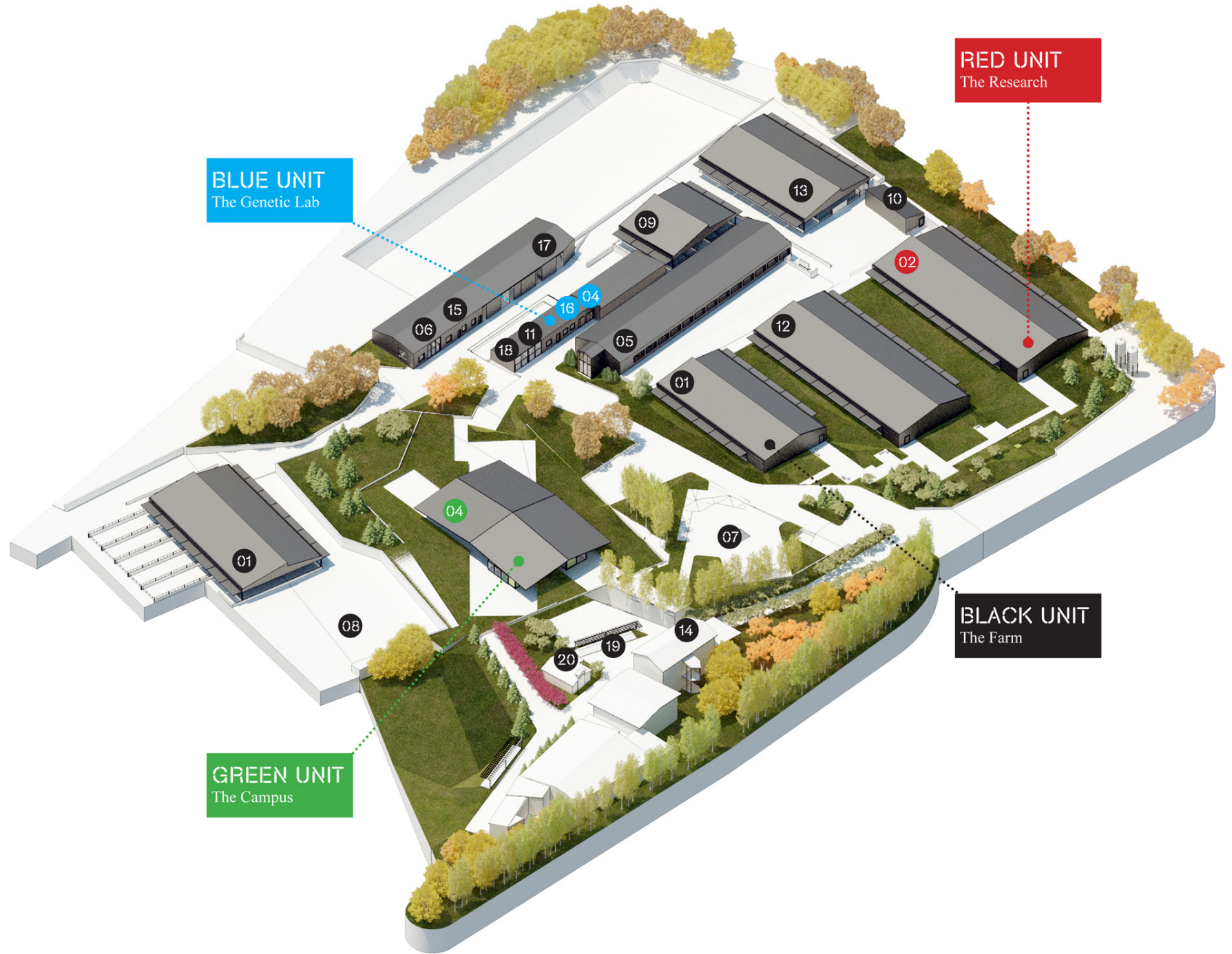
ALEX BACH

Research Professor
Dairy Production

alex.bach@irta.cat

Dr. Bach is an ICREA Research Professor and Director the Department of Ruminant Production of IRTA (a research institute from Catalonia devoted to study ruminant production systems). He conducts research on ruminant nutrition and metabolism, and dairy cow and replacement management.





BLUE UNIT
The Genetic Lab

RED UNIT
The Research

GREEN UNIT
The Campus

BLACK UNIT
The Farm



CONTACT

REGISTRATION FORM

Name:
Address:
Email:
Phone:

Please, send this information with proof of wire of 1,996.5€ to:

info@blancahub.cat

PAYMENT DETAILS

The following information is required to process a transfer in order to pay the total amount of the workshop one month before the starting date. To ensure there are no delays in processing your payment, please provide all the information requested below:

Beneficiary	Blanca from The Pyrenees, S.L.
Bank	Banco Bilbao Vizcaya Argentaria (BBVA)
Address	Avd. Pau Claris, 5 25700 - La Seu D'Urgell (Lleida) Spai
Account Number	0201547331
IBAN	ES1201822811300201547331
SWIFT, ABA, BIC	BBVAESMMXXX

***Please note no refunds are possible**

CONTACT INFORMATION

Please do not hesitate to contact us with any inquire you may have:

Blanca from the Pyrennes

Address:

Calle Única sin Numero
Els Hostalets de Tost
25795 Lleida, Spain

Telephone & Fax:

T:(+34) 872 004 000
F:(+34) 973 016 021

Email:

info@blancahub.cat

